



116 East College Street  
 P.O. Box 445  
 Fayetteville, TN 37334  
 Phone (931) 433-1607  
 Fax (931) 433-5410

# Boonshill - Petersburg Road

## 61 +/- Acres - \$299,900

Firm #4512

Visit our website at [www.bollesrealty.com](http://www.bollesrealty.com).

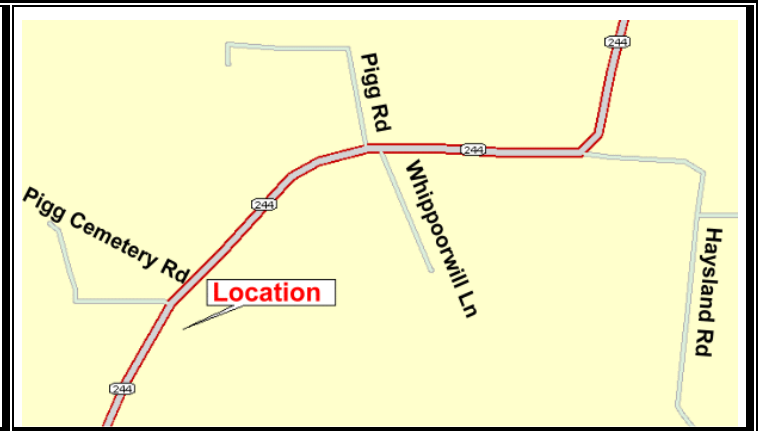
<b>ADDRESS</b>	Boonshill - Petersburg Road, Petersburg, TN 37144		<b>LISTING NO.</b>	9037
<b>Map &amp; Parcel</b>	28 - 23.00	<b>Deed Reference</b>	Deed Book V-13, Page 765	
<b>Description</b>	Acreage, Barn, Ponds		<b>MLS #</b>	1107904



**Zoning** None  
**Sale Includes** Land & Barn  
**Terrain** Rolling to Hill  
**Taxes** \$133

**Road Frontage** 1090 Approximate  
**Type Road** County  
**Road Surface** Blacktop  
**Water** Pond

Beautiful acreage suitable for farming and hunting with ideal building sites. Perimeter fenced with a barn, this tract is a combination of open to woods and rolling to hills with a hilltop view and approximately 1090 feet of road frontage. Water and utilities available.

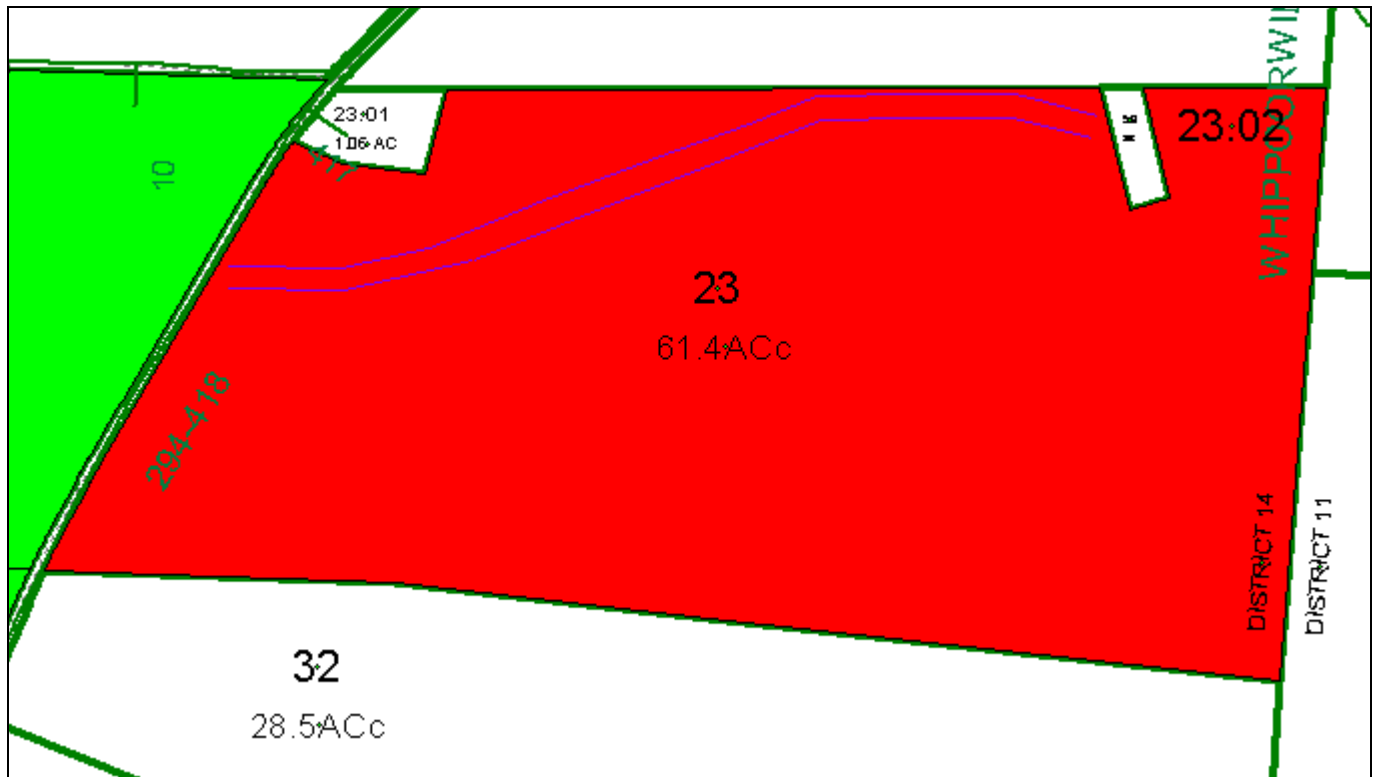


Richard Bolles - Broker / Appraiser  
 Ken Noel - Affiliate Broker  
 Colin Wakefield - Aff. Broker / Appraiser

Linda McWhirter - Affiliate Broker  
 Kathy Gilland - Affiliate Broker  
 Walter Sloan - Affiliate Broker

Neal Scott - Affiliate Broker  
 John Hoagland - Auctioneer / Broker

James Cashion - Broker / Appraiser  
 Jerry Groce - Auctioneer / Aff Broker  
 Cindy Endsley - Aff Broker / Appraiser



**Tax Plat**



**Tax Plat With Aerial View**

Richard Bolles - Broker / Appraiser  
 Ken Noel - Affiliate Broker  
 Colin Wakefield - Aff. Broker / Appraiser

Linda McWhirter - Affiliate Broker  
 Kathy Gilland - Affiliate Broker

Neal Scott - Affiliate Broker  
 John Hoagland - Auctioneer / Broker  
 Walter Sloan - Affiliate Broker

James Cashion - Broker / Appraiser  
 Jerry Groce - Auctioneer / Aff Broker  
 Cindy Endsley - Aff Broker / Appraiser